



Custom Metal Contracting Glazing & Curtainwall Systems

- › VISIT CUSTOMMETAL.AB.CA
- › CALL +1 403-291-9767
- › EMAIL SALES@CUSTOMMETAL.AB.CA

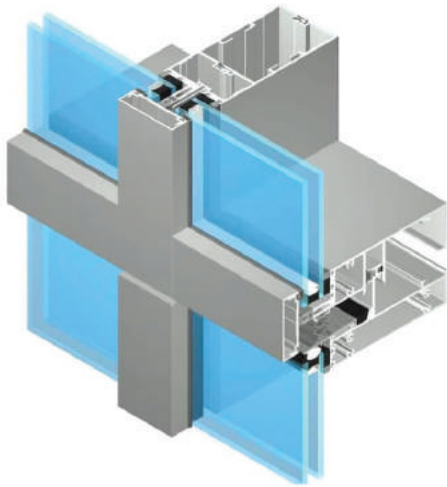
- › BASED IN CALGARY ALBERTA CANADA
- › FOUNDED IN 1980
- › 150+ EMPLOYEES + 87,000 FT.² FACILITIES

Glazing & Curtainwall Systems

The CMC Glazing division was established in 2015 and specializes in unitized curtain wall systems.

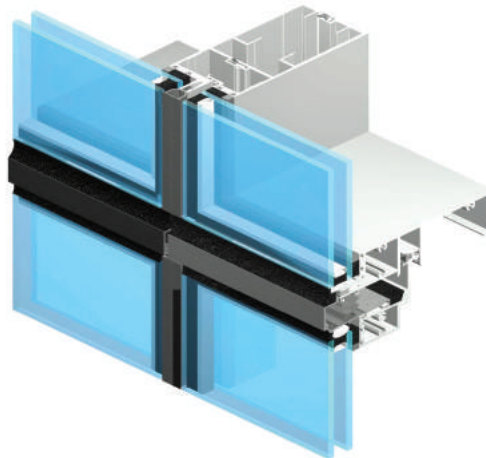
Boasting state-of-the-art equipment, we practice Lean Management to maximize production capacity and quality.

With our experienced in-house engineering department and designers, we can customize solutions to support any project scope.



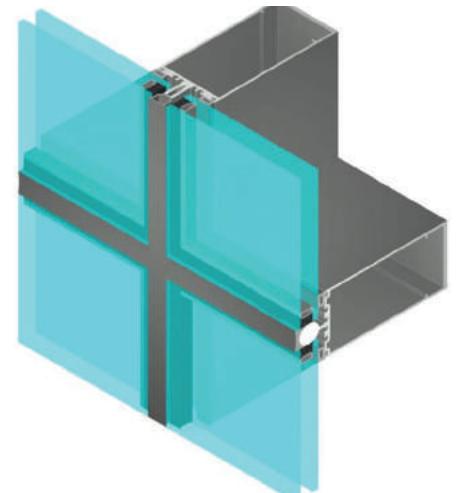
Unitized Curtainwall System

Pressure equalized system, tailored to meet bespoke architectural requirements and design load requirements. Thermally efficient.



Hybrid Unitized Curtainwall System

A system built to outperform leading competition. Performs like a curtainwall system, with the cost savings of a window wall system.



HP Stick System

Designed for rapid production and install. This high performance system is available in SSG, 4sided and 2sided cap. Thermally efficient.



Services Customized to your Project Needs



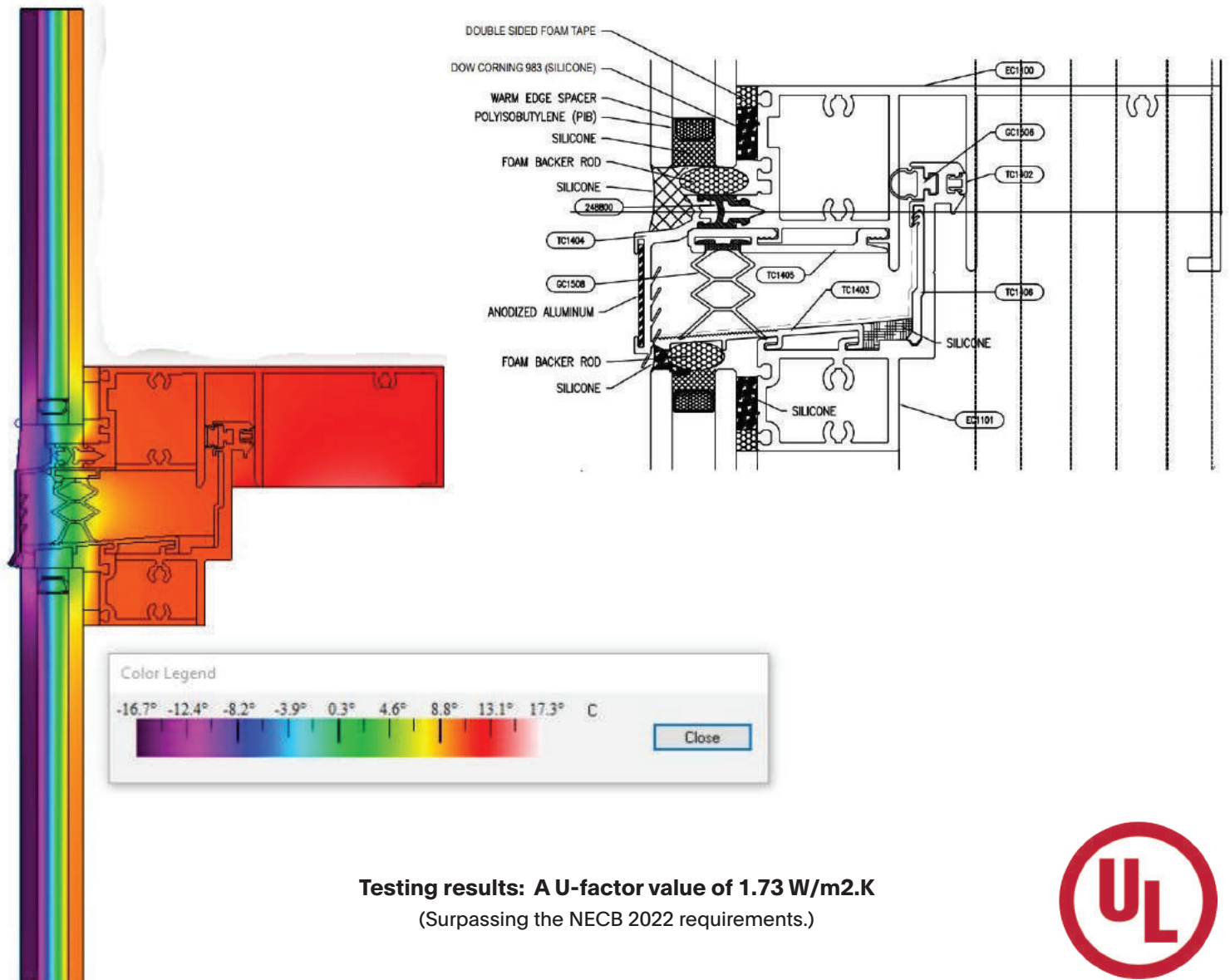
CMC offers all types of commercial glass.

- Projects of Any Scale and Design Need
- Glass Doors, Skylights & Canopies
- Commercial Terrace Doors & Windows
- Sealed Unit and Single Pane Glass
- Aluminum Window Storefronts
- Aluminum Curtainwall
- Retrofits
- Customer Retail Units (CRU)
- Interior Office Glazing / Improvements
- Mixed Residential
- Office Conversions
- Commercial Offices



CMC HP Thermal Hybrid Unitized System (modeled thermal simulation)

Using double-pane glass the U-factor analysis in thermal testing meets and exceeds NECB requirements.

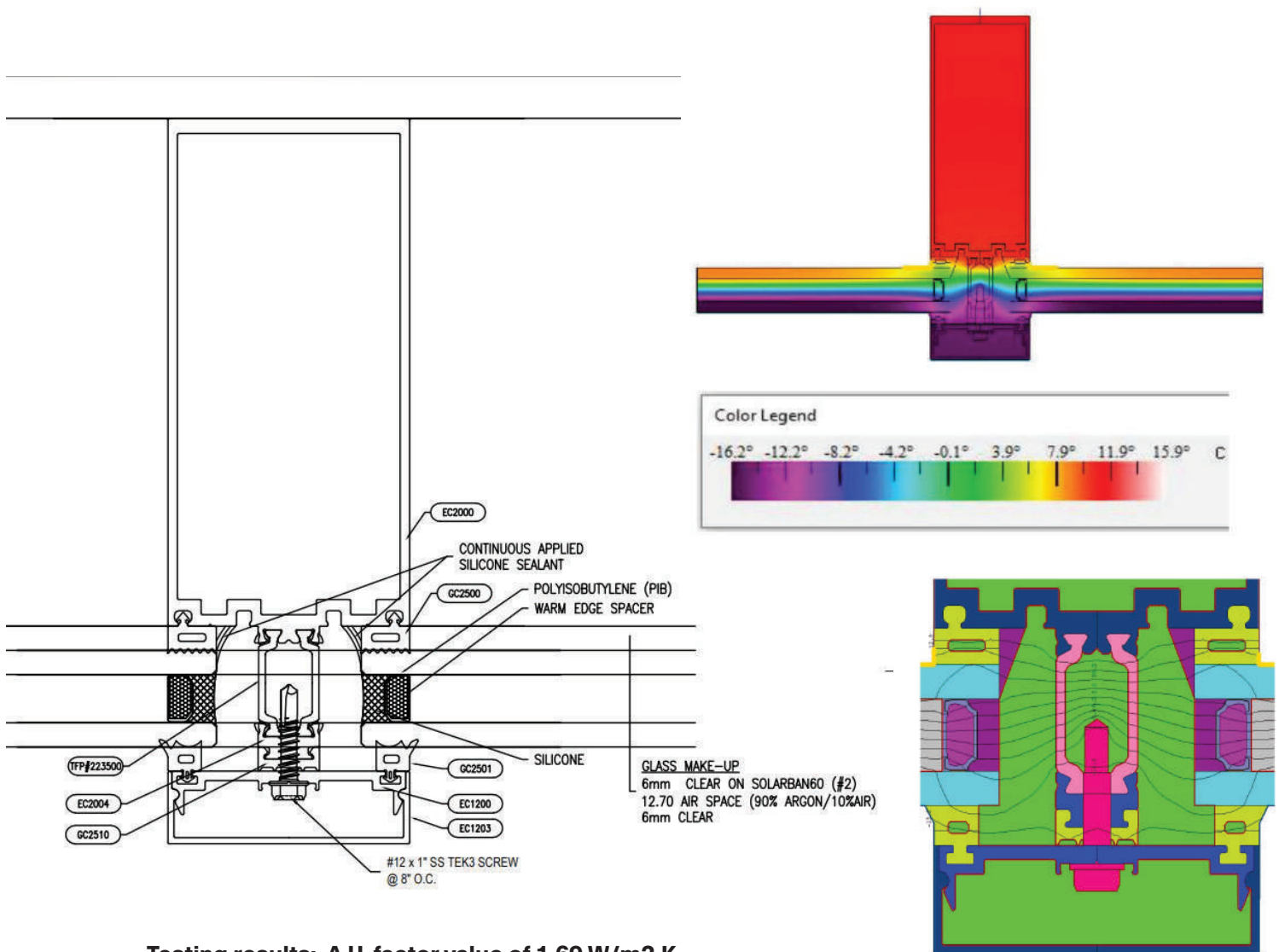


Testing results: A U-factor value of 1.73 W/m2.K
(Surpassing the NECB 2022 requirements.)



CMC HP Thermal Stick System (modeled thermal simulation)

Screw added in the simulation. All gaskets are EPDM. Using double-pane glass. Meets and exceeds NECB requirements.

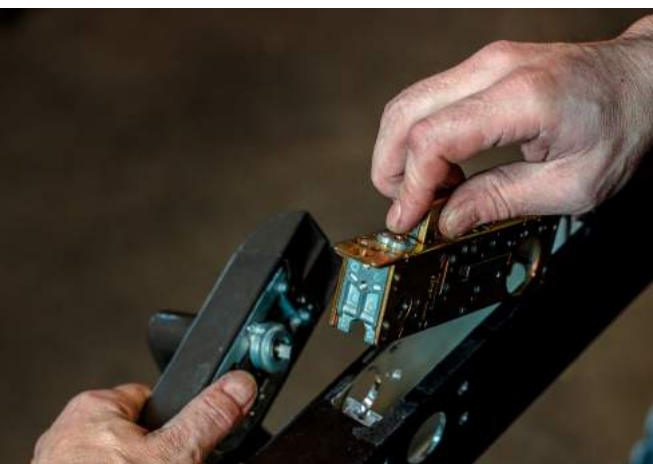
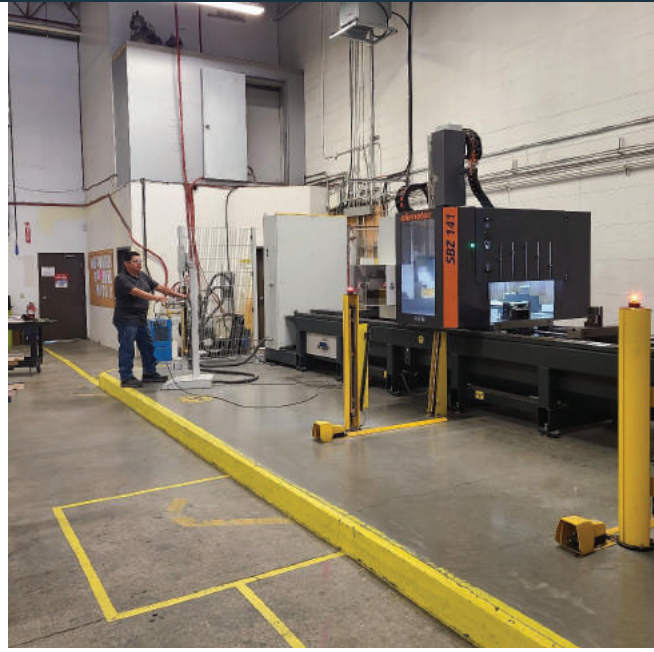


Testing results: A U-factor value of 1.69 W/m².K
 (Surpassing the NECB 2022 requirements)



OUR FACILITIES

Glazing Plant



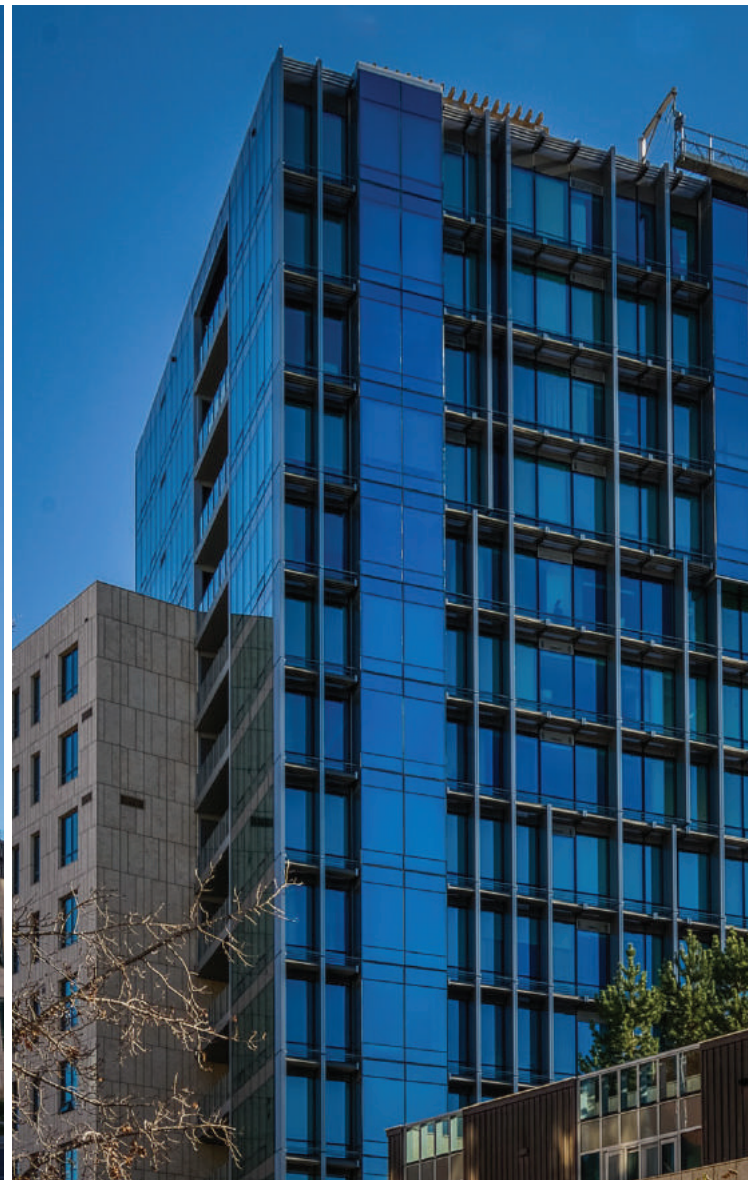
FEATURE PROJECT

The River Residential Tower



PROJECT The River
LOCATION Calgary, Alberta
YEAR 2013
CONSTRUCTOR Ledcor Construction
SIZE 30,000+ Ft.²

CMC PRODUCTS
→ Unitized Curtainwall



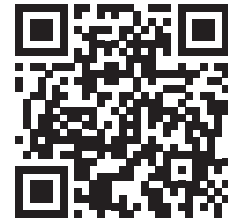


Head Offices

- > VISIT CUSTOMMETAL.AB.CA
- > CALL +1 403-291-9767
- > EMAIL SALES@CUSTOMMETAL.AB.CA

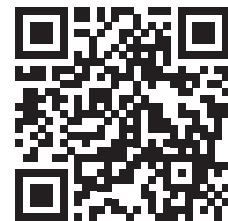
Panels Division

- > VISIT CMCPANELS.COM
- > CANADIAN INQUIRIES CALL +1 403-291-9767
- > USA INQUIRIES CALL +1 971-803-3810
- > EMAIL SALES@CUSTOMMETAL.AB.CA



Glazing Division

- > VISIT CMCGLAZING.CA
- > CALL +1 403-717-1960
- > EMAIL INFO@CMCGLAZING.CA



Manufacturing Division

- > VISIT CMCMANUFACTURING.COM
- > CALL +1 403-291-9767
- > EMAIL INFO@CMCMANUFACTURING.COM

