



CMC GR601
HORIZONTAL GRILL
6" INVERTED BLADE

Application and Design

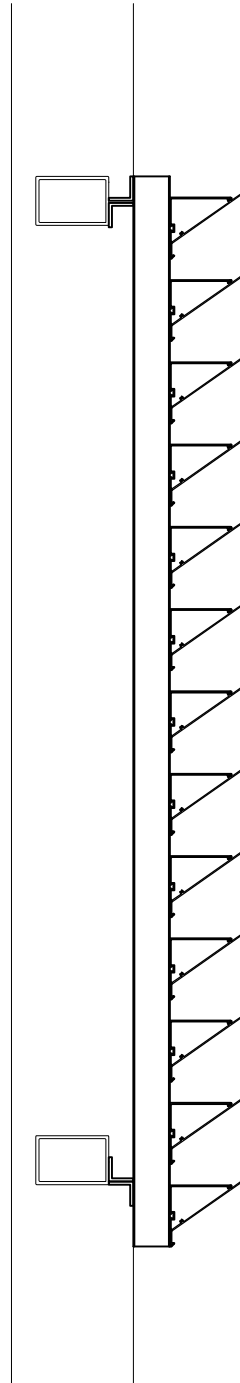
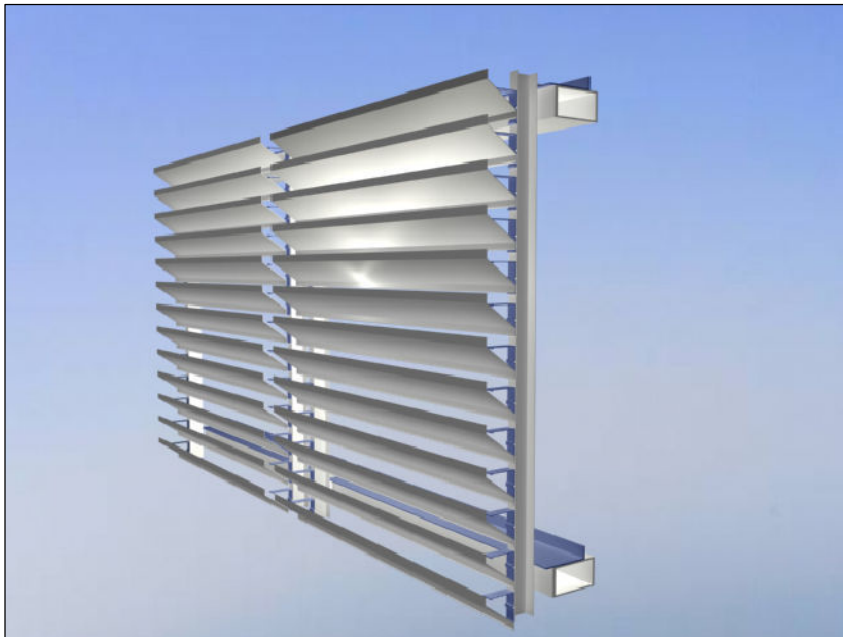
CMC GR601 is 6 inch deep equipment screen designed to inhibit vision from grade or lower elevations while also serving as a protective barrier. The grill is designed with 6 inch inverted horizontal blades attached to vertical clips and aluminum supports.

STANDARD CONSTRUCTION

Material: 6063-T5 Extruded Aluminum
 Screen Depth: 6" (152mm)
 Blades: Inverted horizontal, 6063-T5 extruded aluminum
 0.81 in. nominal thickness
 spaced on 6.75" (171mm) centers.
 Construction: Mechanically fastened.
 Vertical Support: Aluminum C-channel.
 Web - 3"(76.2)" (.25"(6.35mm)Thick)
 Flange - 2"(50.8)" (.31"(7.9mm)Thick)
 Finish: Kynar 500 or unpainted finish to receive anodic
 oxide coating
 Color: To be determined

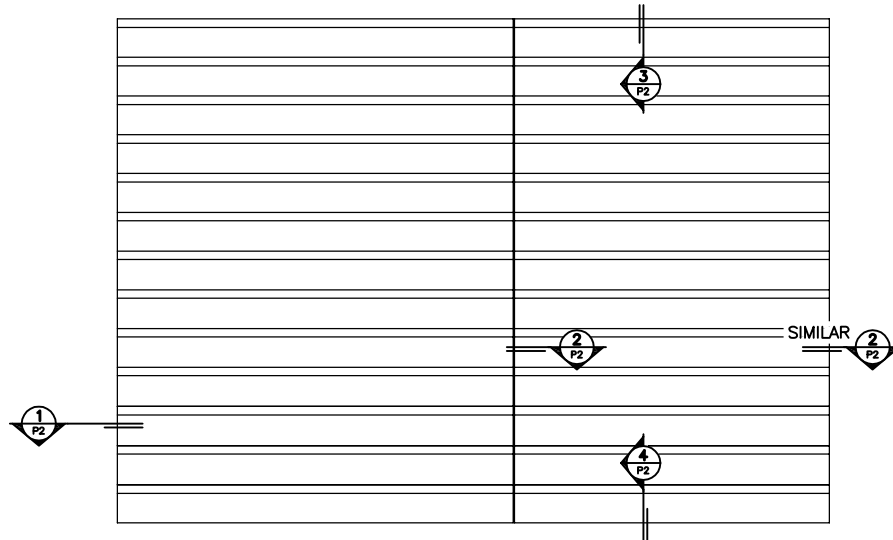
PERFORMANCES

BLADE SLOPE: 35%
 FREE AREA: 8.23 sq. ft. (51.4%)

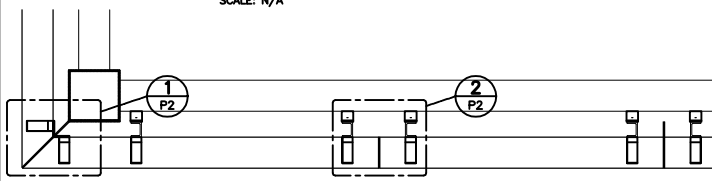


1 LOUVER SECTION
 P1 P1 SCALE: N/A REF: none

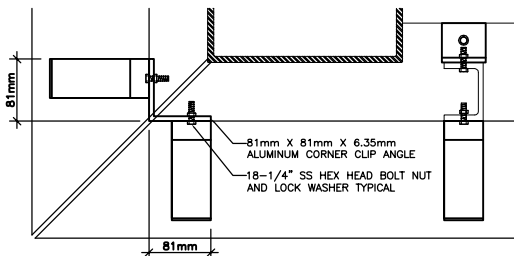
DRAWING TITLE		PROJECT		
CMC GR601				
PROJECT NO.	LOCATION	DATE	DRAWN BY	PAGE
				P1



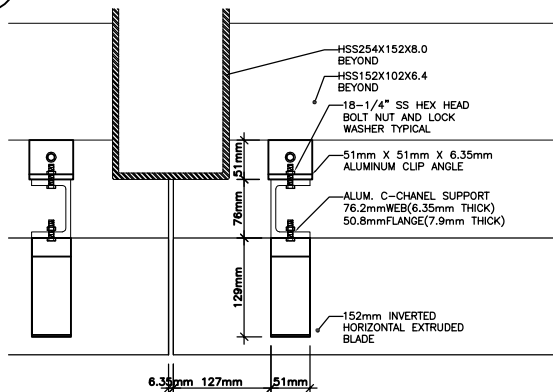
ELEVATION VIEW
SCALE: N/A



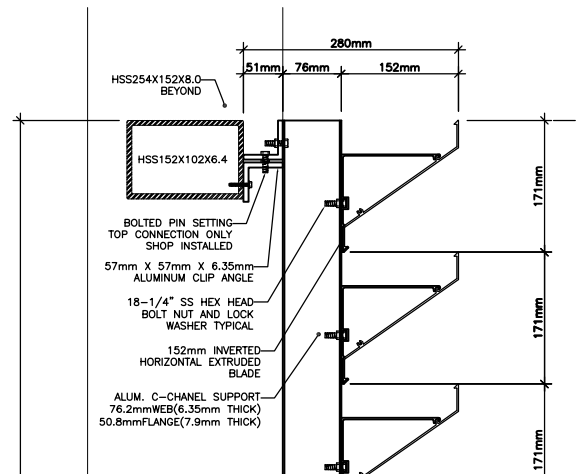
PLAN VIEW
SCALE: N/A



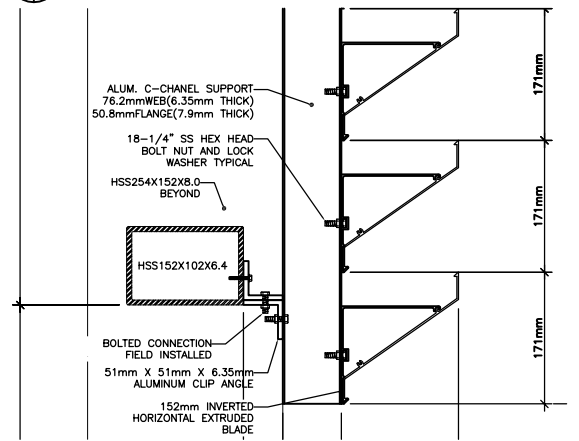
1 OUTSIDE CORNER PLAN DETAIL
SCALE: N/A REF: none



2 TYP. JOINT PLAN DETAIL
SCALE: N/A REF: none



3 HEAD LOUVER DETAIL
SCALE: N/A REF: none



4 SILL LOUVER DETAIL
SCALE: N/A REF: none

DRAWING TITLE		PROJECT	
CMC GR601			
PROJECT NO.	LOCATION	DATE	DRAWN BY
		PAGE	P2